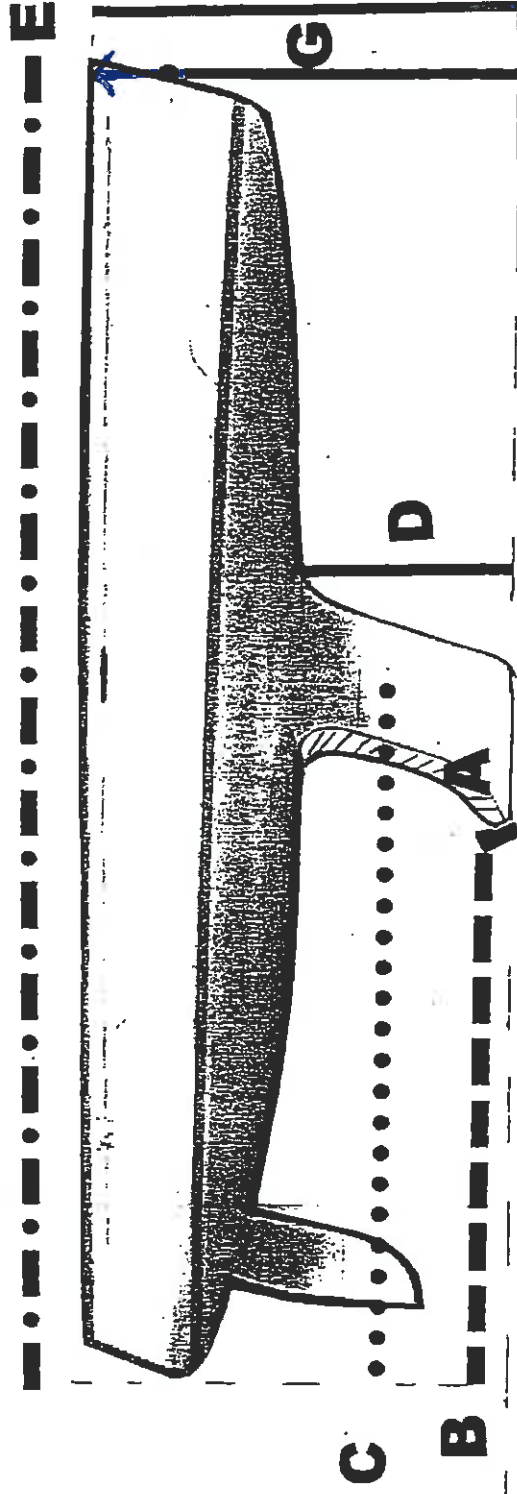


# Sailboat Trailer Spec. Sheet

Customer: \_\_\_\_\_

Boat: PERSON COMMANDER

Date: \_\_\_\_\_



..... F

- (A) Width (Thickness) of Keel: Bow END: 82 1/2"
- (B) Transom to Back of Keel: 82 1/2"
- (C) Transom to Center of Keel: 152" ± to CG (CENTER OF GRAVITY) AFFIX
- (D) Bottom of Keel to Hull (Height): Bow END: 29" (D1) STERN END (D2): 39"
- (E) Length of Transom to Front of Boat: 25'-7" (307")
- (F) Length of Keel: 80"
- (G) Bottom of Keel to ~~Boweye~~. (If not Boweye, Bottom of Keel to Deck): 88"

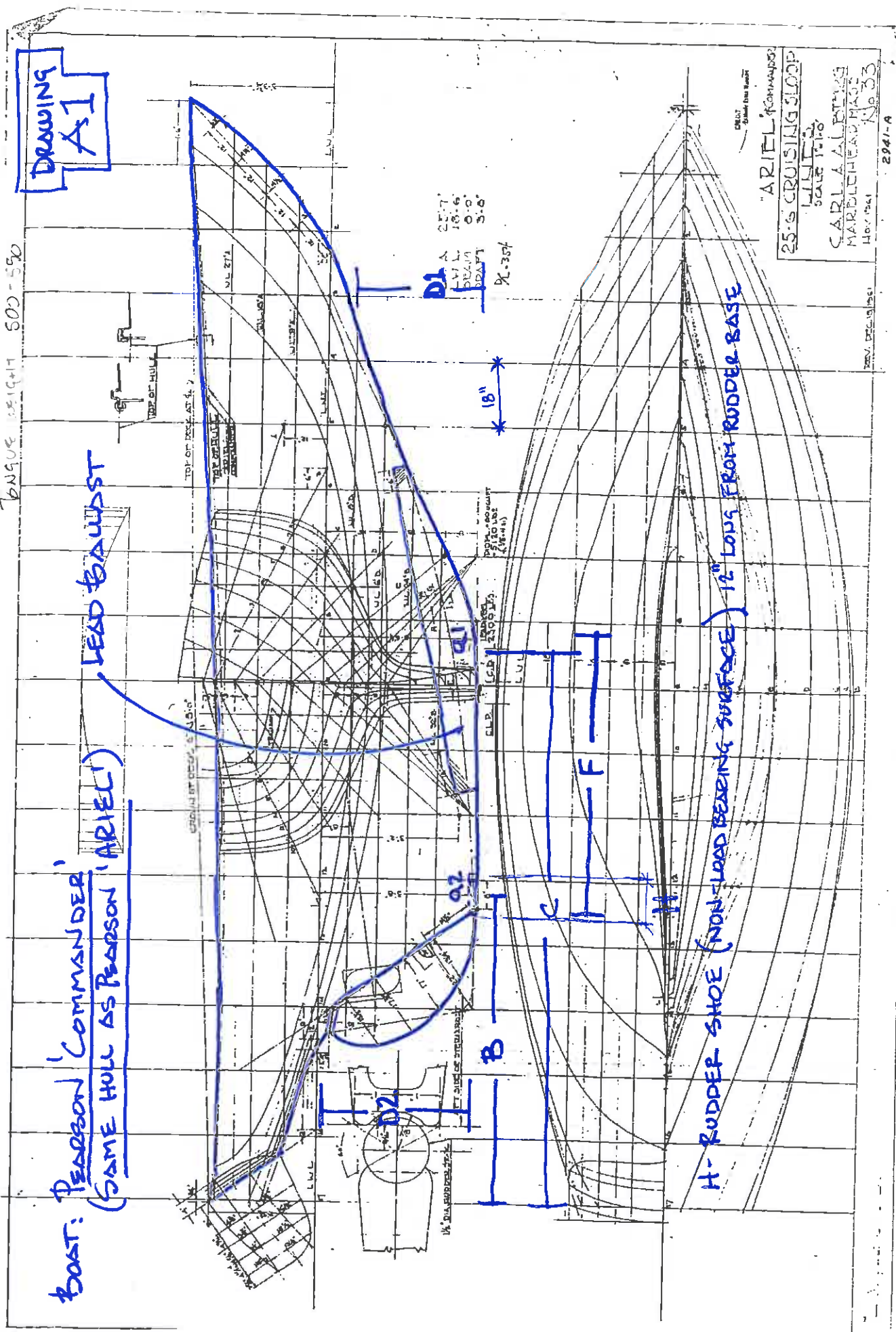
NOTE  
a2 11

NOTE  
a1 STERN END: 2-1/2

FOR  
SEE DWG A1 NOTES

2 of 3

(A) WIDTH (THICKNESS) OF KEEL: LOCATIONS: A2 @ 2 1/2" and 9" @ A1



BOAT: PEARSON COMMANDER (SAME HULL AS PEARSON ARIEL)

LEAD BAUWST

H- RUDDER SHOE (NON-LOAD BEARING SURFACE) 12" LONG FROM RUDDER BASE

ARIEL COMMANDER  
 25'S CRUISING SLOOP  
 SCALE 1/8"  
 CARL A. ALBERTS  
 MARBLEHEAD MASS  
 Nov 1964  
 No. 33  
 2941-A

B  
O  
A  
T  
M  
O  
D  
E  
L  
S  
K  
I  
T  
H  
O  
U  
G  
H  
T  
F  
U  
L  
I  
N  
G

# Keel Bunk Measurement Guide

Distance = Up to 30" out from Centerline. Must hit Hull Bottom, not Side. Please note distance from centerline and that distance up to Hull.  
Example: 30" out from centerline = 28" Vertical up to hull

Same as Other Outside. Only need to Measure One Side.

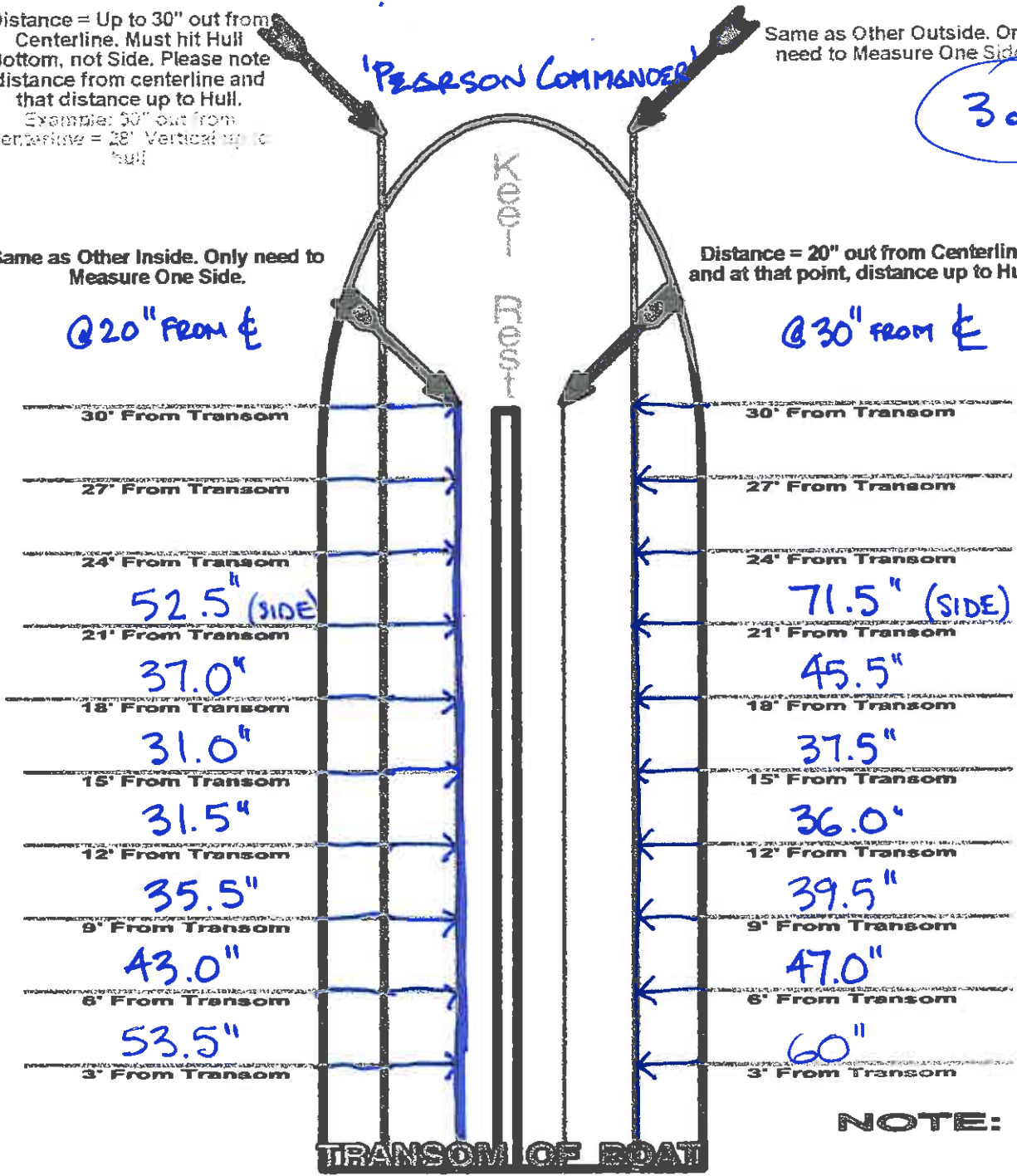
3 of 3

Same as Other Inside. Only need to Measure One Side.

Distance = 20" out from Centerline. and at that point, distance up to Hull.

@ 20" from  $\epsilon$

@ 30" from  $\epsilon$



NOTE:

Date. 07-24-06 Boat Name. PERSON 'COMMANDER' (SAME HULL AS THE MORE COMMON PERSONS 'ARIEL') Sailboat.psd

Year Boat Made. 1965 Boat Weight. ~ 5400#  
Overall Length. 25'-7" Beam. 8' Draft. 3'-8"  
Keel Type. Full

Answer as many questions as possible.  
Add any other information that you may have.  
If any dimensions are approximate, make sure that you state this on the drawing.

Send all drawings and photos you may have,  
all information will be returned on request.

